



## Accessories for Overvoltage Protection



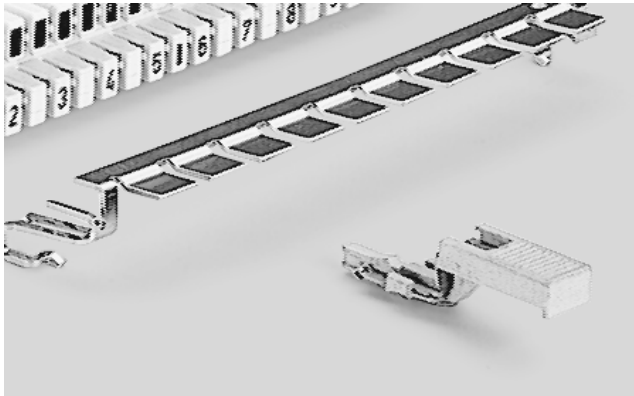
### Automatic tester for protection devices

Portable ComProtect test device for measuring tolerance limits, interruptions and short-circuits in protection circuits. Automatic measurement of wall positions of the adapter used. Visual and audible fault signals. Supplied in a case.

Dimensions: 170 x 400 x 70mm



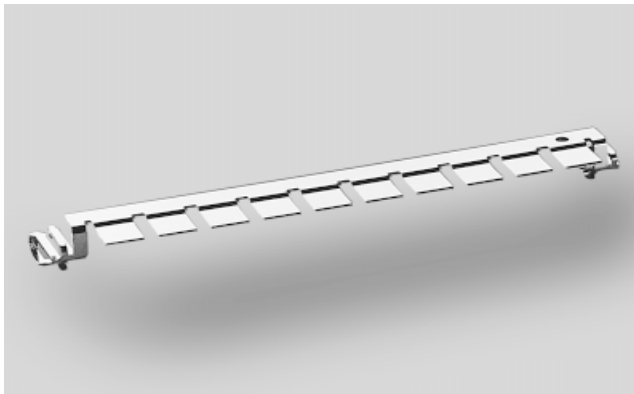
Order data:	Order No.	Description	Weight/Pack	Pack
	5909 1 302-00	ComProtect test device	5.000kg	1 piece
	5909 1 303-00	LSA-PLUS 2/10 adapter for the portable ComProtect test device with a slot for LSA-PLUS magazines 2/10 and 1-pair ComProtect protection plugs	0.750kg	1 piece
	5909 1 306-00	LSA-PLUS NT adapter for the portable ComProtect test device with a slot for LSA-PLUS NT magazines and 1-pair NT protection plugs	0.750kg	1 piece
	5909 1 307-00	LSA-PLUS 2/7 adapter for the portable ComProtect test device with a slot for LSA-PLUS magazines 2/7	0.750kg	1 piece
	5909 1 304-00	Software for A46-K software and adapter cable for the portable ComProtect test device for statistic measured-value acquisition and evaluation on the PC	0.750kg	1 piece

**1-pair earth plug for LSA-PLUS®**

For direct surge-current earthing of LSA-PLUS / PROFIL disconnection, switching and connection modules via the earth bar 2/8 or 2/10. In the LSA PROFIL system, earth clips 6089 2 122-00 are necessary (2 for each module).

Packaging unit: 10 pieces, incl. 1 earth bar 2/10

Order data:	Order No.	Description	Weight/Pack	Pack
	5909 1 112-00	2/1 CP GZA1	0.060kg	1 set

**Earth bar for LSA-PLUS®, Series 2**

Series A, B, C, D and H. Provides an earth connection between the ComProtect protection plugs and the distribution frame. One earth bar 2/10 is included in a (10-piece) set of ComProtect protection plugs (series A, B, C, D and H).

Order data:	Order No.	Description	Weight/Pack	Pack
	5909 3 041-00	Earth bar 2/10 for 10-pair modules	0.010kg	1 piece
	5909 3 042-00	Earth bar 2/8 for 8-pair modules	0.008kg	1 piece



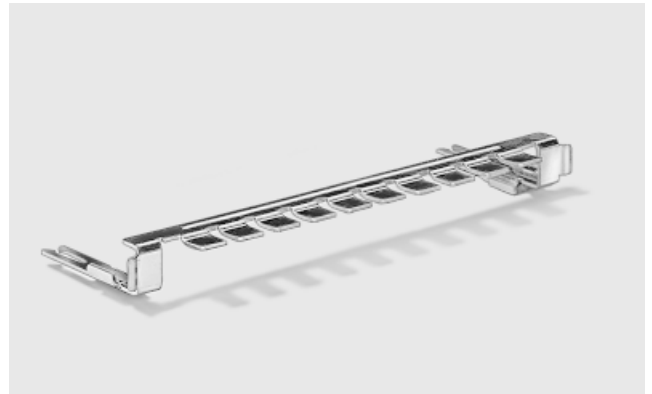


## Accessories for Overvoltage Protection



### Earth bar for LSA-PLUS® NT

Earth connection for 1-pair protection plug in the LSA-PLUS NT distributor system for 10 or 8 pairs between the protection plugs and the distribution frame. One earth bar is included in a set of NTP protection plugs.

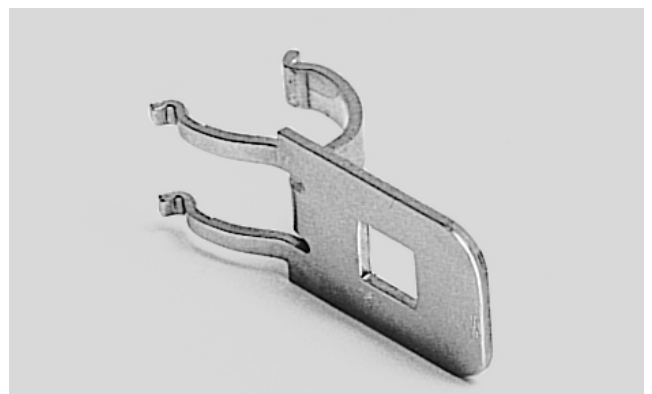


Order data:	Order No.	Description	Weight/Pack	Pack
	7019 3 017-00	Earth bar NTP/10 earth connection for 1-pair protection plug in the LSA-PLUS NT distributor system, 10 pairs	0.010kg	1 piece
	7019 3 016-00	Earth bar NTP/8 earth connection for 1-pair protection plug in the LSA-PLUS NT distributor system, 8 pairs	0.008kg	1 piece

### Earth clip

Provides the contact between the earth bar 2/8 or 2/10. This clip is required when protection devices are used with LSA PROFIL modules Series 2 mounted on 12mm PROFIL rods.

Also refer to chapter 5.7 "LSA-PLUS/PROFIL Accessories".



Order data:	Order No.	Description	Weight/Pack	Pack
	6089 2 122-00	Earth clip	0.055kg	20 pieces



## Fail-safe contacts

Fail-safe for overvoltage protection magazines 2/10 or 2/8 with 8 x 6 mm GDTs. For thermal overload protection in the event of overheating. Only for use in conjunction with metal-ceramic-type GDTs.

Order data:	Order No.	Description	Weight/Pack	Pack
	6417 2 010-00	Thermal protection spring		1 piece



## Magazine cover

Transparent cover for overvoltage protection magazines 2/10 with GDTs 8 x 6 and 8 x 13.

Order data:	Order No.	Description	Weight/Pack	Pack
	6417 3 022-01	Magazine cover	0.005kg	1 piece

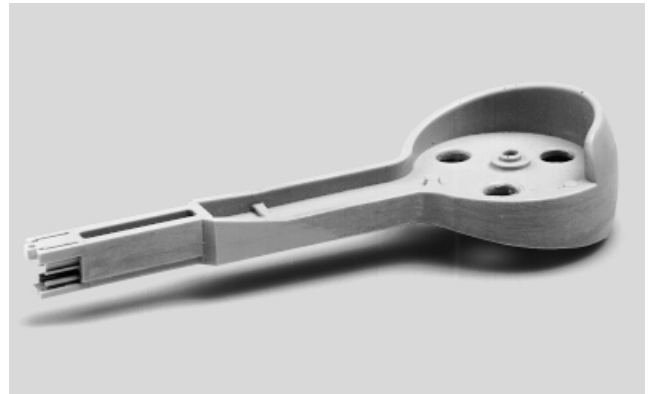


## Accessories for Overvoltage Protection



### Insertion tool ComProtect® H

For wire termination on LSA-PLUS / PROFIL modules with fitted ComProtect, type H, plugs.  
One CP H insertion tool is included in the ComProtect H packaging unit (with 100 protection plugs).



Order data:	Order No.	Description	Weight/Pack	Pack
	6417 3 117-00	Insertion tool CP H	0.023kg	1 piece

### Fail-safe ring for MDF 71 magazines

Fail-safe for magazines 71/4 AT or 71/5 AT in MDF 71; for use only in conjunction with metal-ceramic-type GDTs (MK, 8 x 6).



Order data:	Order No.	Description	Weight/Pack	Pack
	6709 3 003-01	Fail-safe ring		1 piece



## 2-pole overvoltage arrester

Gas-filled overvoltage arrester (2-pole), type 8 x 6 (ceramic) 10 KA/10 A, as an effective form of protection for a large variety of applications. 20 GDTs are necessary for 10 pairs. Fail-safe contacts are optional and can also be provided.

Order data:	Order No.	Description	Weight/Pack	Pack
	6717 3 341-00	8 x 6, MK, 90V 20 KA/20 A	0.014kg	1 piece
	6717 3 343-00	8 x 6, MK, 230V 20 KA/20 A	0.014kg	1 piece
	6717 3 343-01	8 x 6, MK, 230V 10 KA/10 A	0.014kg	1 piece
	6717 3 344-00	8 x 6, MK, 350V 20 KA/20 A	0.014kg	1 piece



## Accessories for Overvoltage Protection



### 3-pole overvoltage arrester

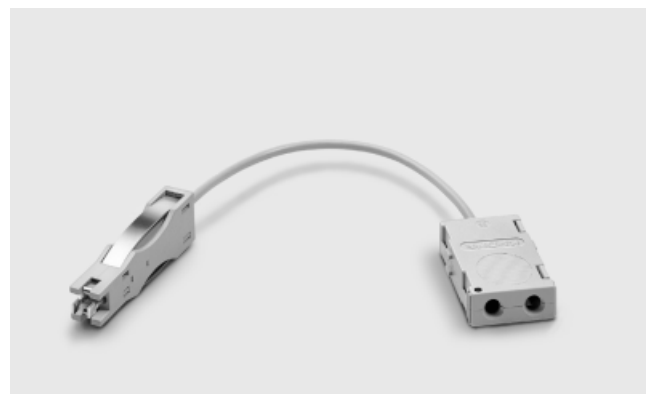
Gas-filled overvoltage arrester (3-pole) with fail-safe, type 8 x 13 (ceramic) 5 KA/5 A, as an effective form of 3-point protection for a large variety of applications. 10 GDTs are necessary for 10 pairs.



Order data:	Order No.	Description	Weight/Pack	Pack
	6717 3 503-00	8 x 13, MK, 230V without fail-safe	0.024kg	1 piece
	6717 3 504-00	8 x 13, MK, 350V without fail-safe	0.024kg	1 piece
	6717 3 513-00	8 x 13, MK, 230V with fail-safe	0.024kg	1 piece
	6717 3 514-00	8 x 13, MK, 350V with fail-safe	0.024kg	1 piece

### Test cord (7052), 1-pair

For testing on LSA-PLUS/PROFIL with ComProtect (versions A, B and H) installed. The test plug is directly inserted via spring pins into the unconnected or (up to 0.65mm in diameter) connected LSA-PLUS Series 2 contacts. With two sockets, 4mm in diameter, at the other end of the cord.



Order data:	Order No.	Description	Weight/Pack	Pack
	6089 2 141-00	Test cord (7052), 1-pair	0.040kg	1 piece



**Test cord for ComProtect® H**

For measuring and testing with ComProtect, version H, installed. For measuring in both line directions, the plug is inserted into the measuring point of ComProtect H. With two banana sockets.

**Order data:**

Order No.	Description	Weight/Pack	Pack
5909 2 301-00	Test cord CP H	0.040kg	1 piece