

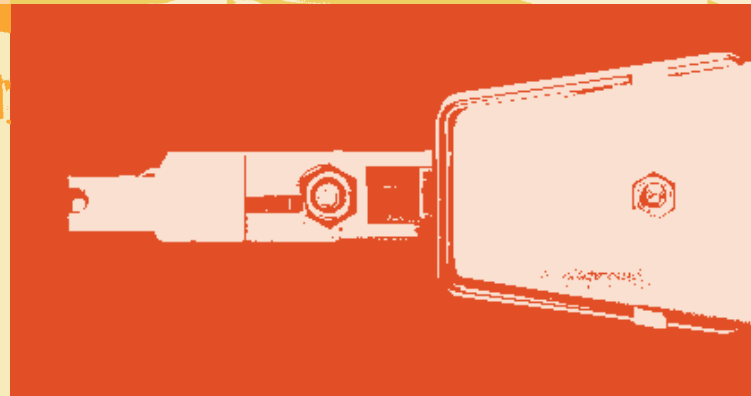
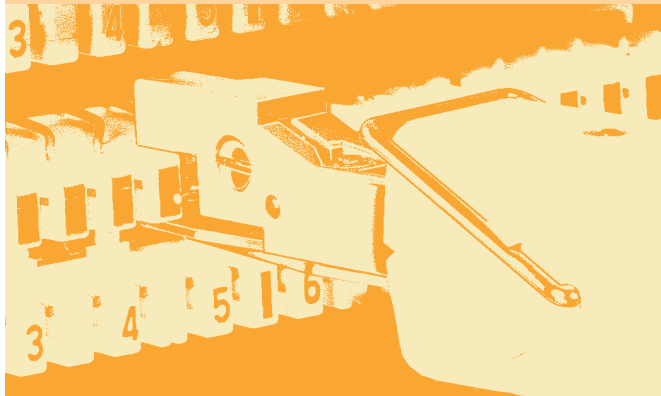
LSA-PLUS® Insertion Tool with Sensor

Expert Knowledge



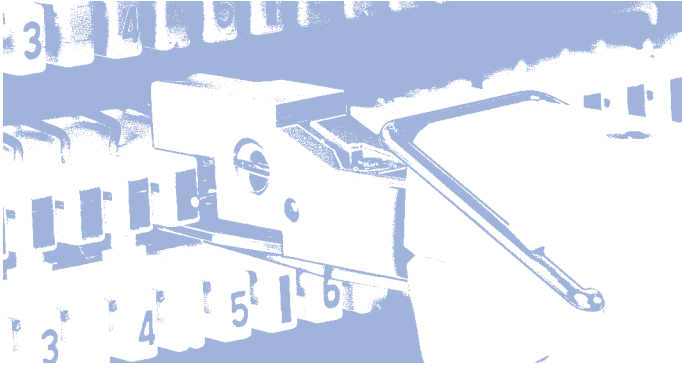
10.0

Overview





Overview



The LSA-PLUS Insertion Tool S is the central component for the connection of wires on the KRONE LSA-PLUS / LSA-PROFIL modules and in applications throughout entire network topologies.

From the main distribution frame right up to the subscriber socket, only one single tool is needed. This chapter describes the function of the insertion tool and its accessories.



Contents of this chapter

- 10.0 Overview
- 10.1 Possibilities for use and technical specifications